

MSR Manager Utility Installation Guide

July.2020

Contents

I. Installation.....	3
II. Run MSR Manager Utility	5
i. Main Screen	5
ii. MSR Track and Leading Code settings	6
iii. MSR not be detected.....	7
III. Switch to Virtual COM interface.....	8

I. Installation

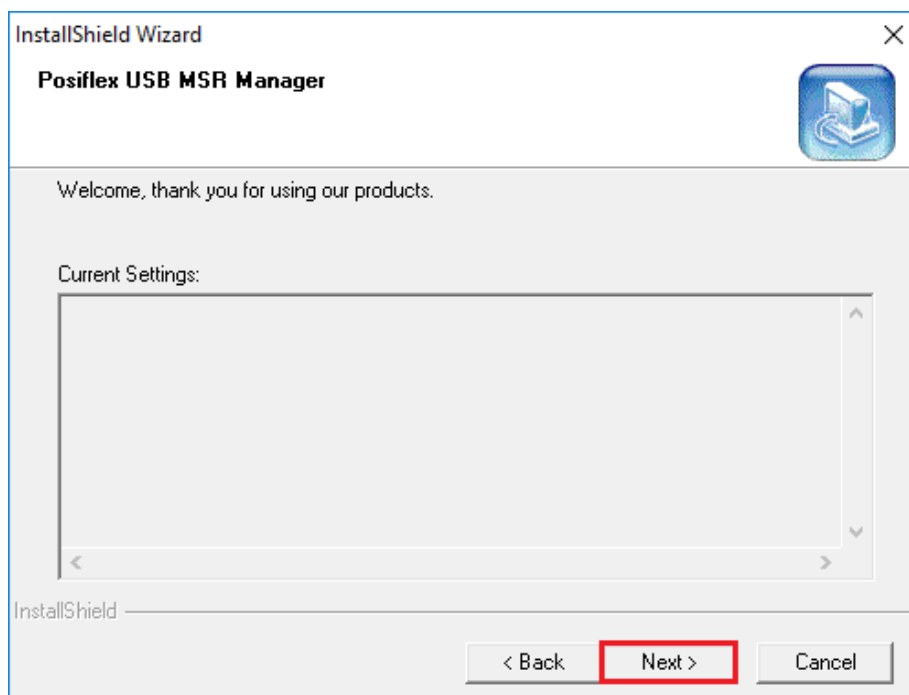
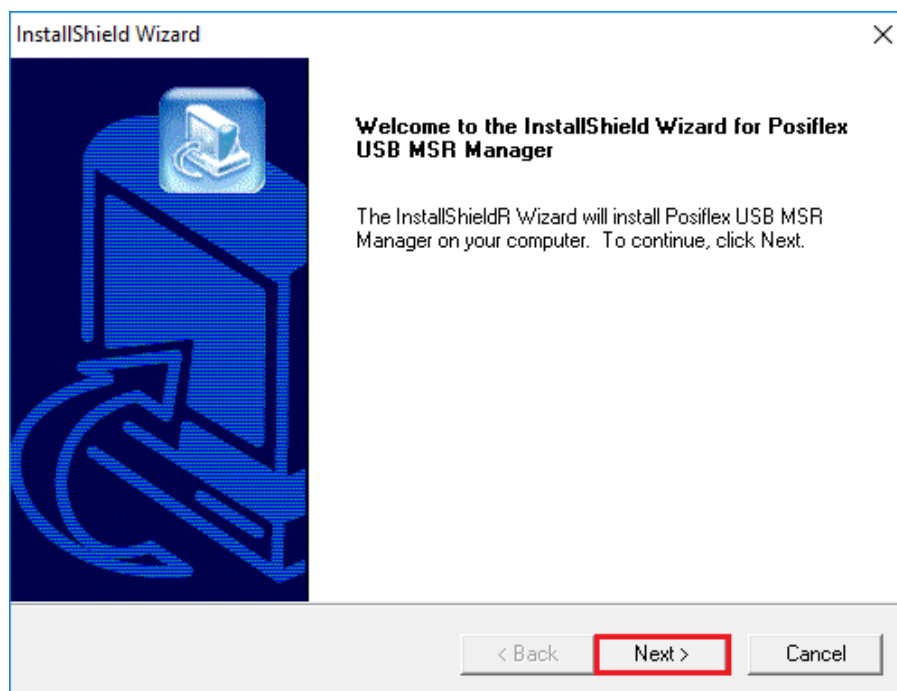
1. Please download the MSR Manager Utility from Posiflex website.

http://posiflex.com/en-global/Download/index/driver/MR/MR-2106_MR-2200

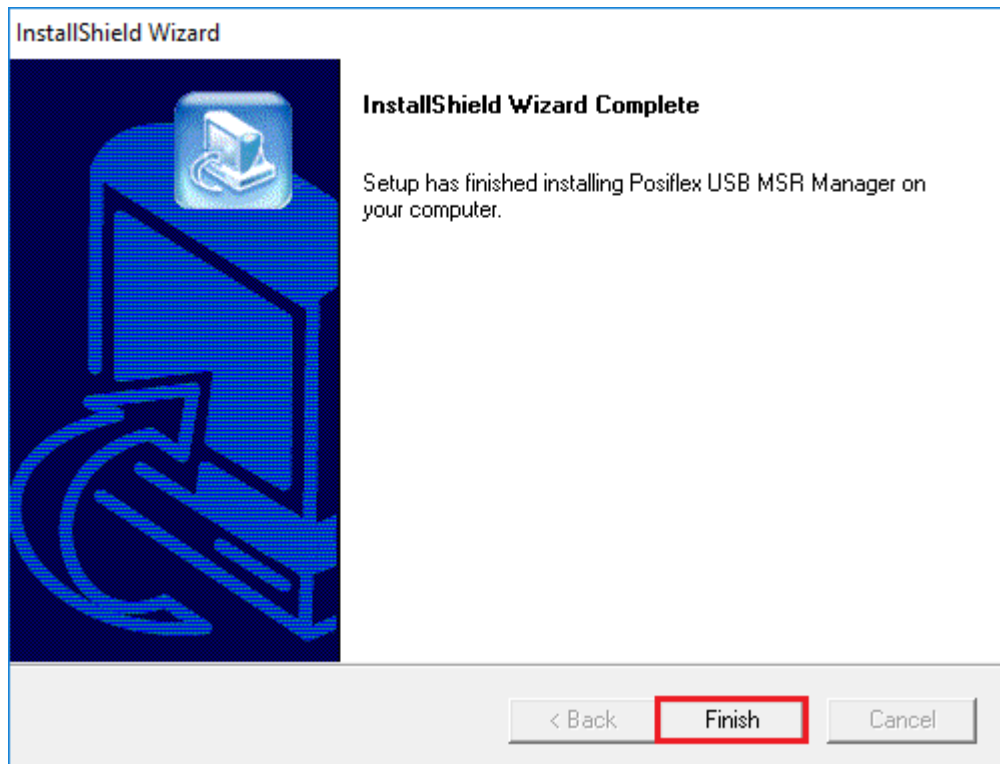
MSR Manager Utility for USB interface Magnetic Stripe Card Reader

2. Unzip the .rar file & double-click the “**Setup.exe**” to install the MSR Manager Utility.

3. Click “**Next**” to proceed the installation.

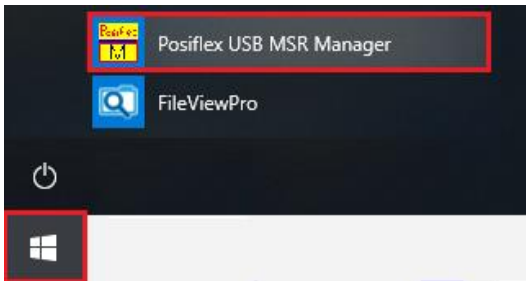


4. After the installation finished, please click “Finish”.



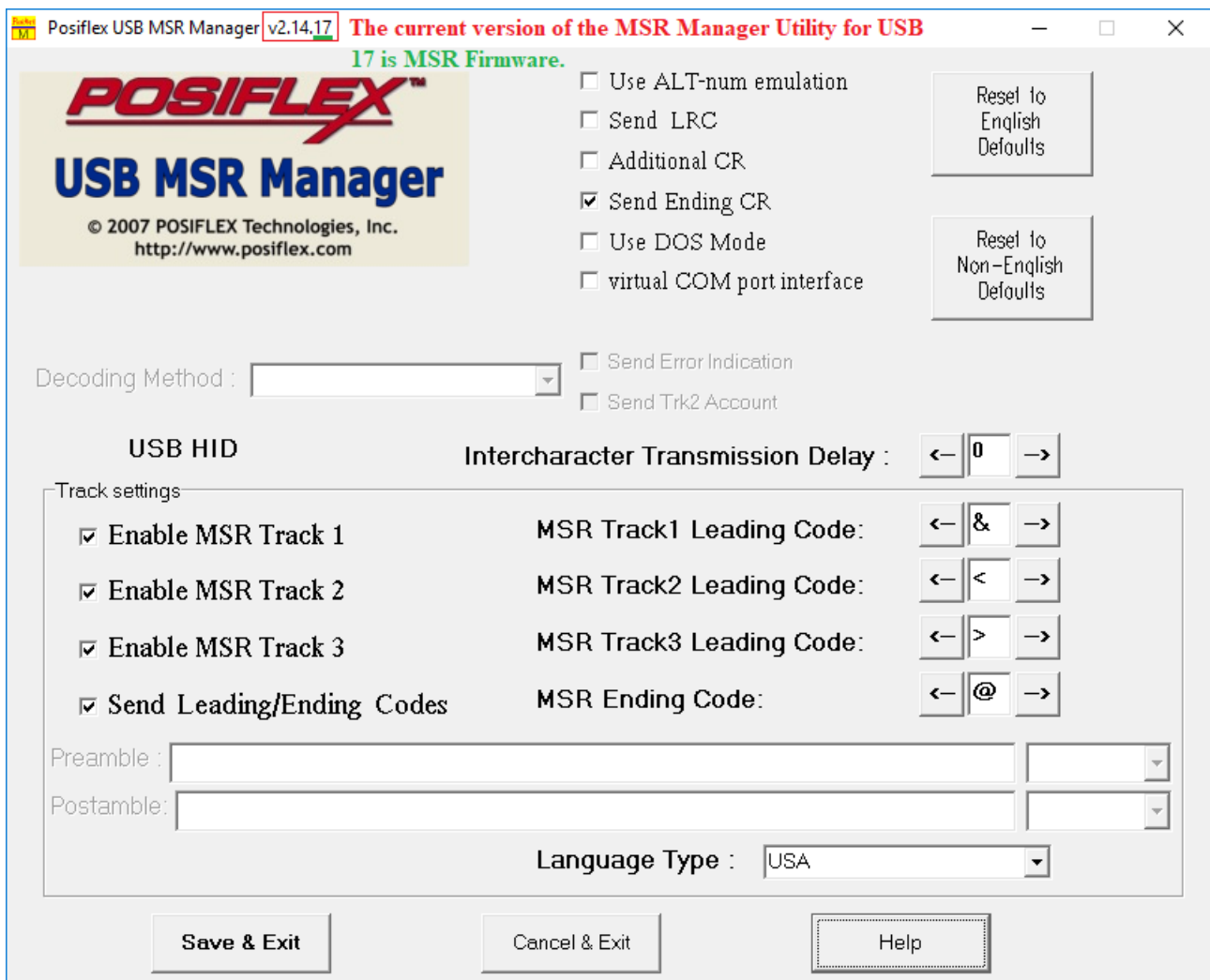
II. Run MSR Manager Utility

After installation finished, you can find the MSR Manager Utility from: “**Start**” menu -> “**Posiflex USB MSR Manager**”.



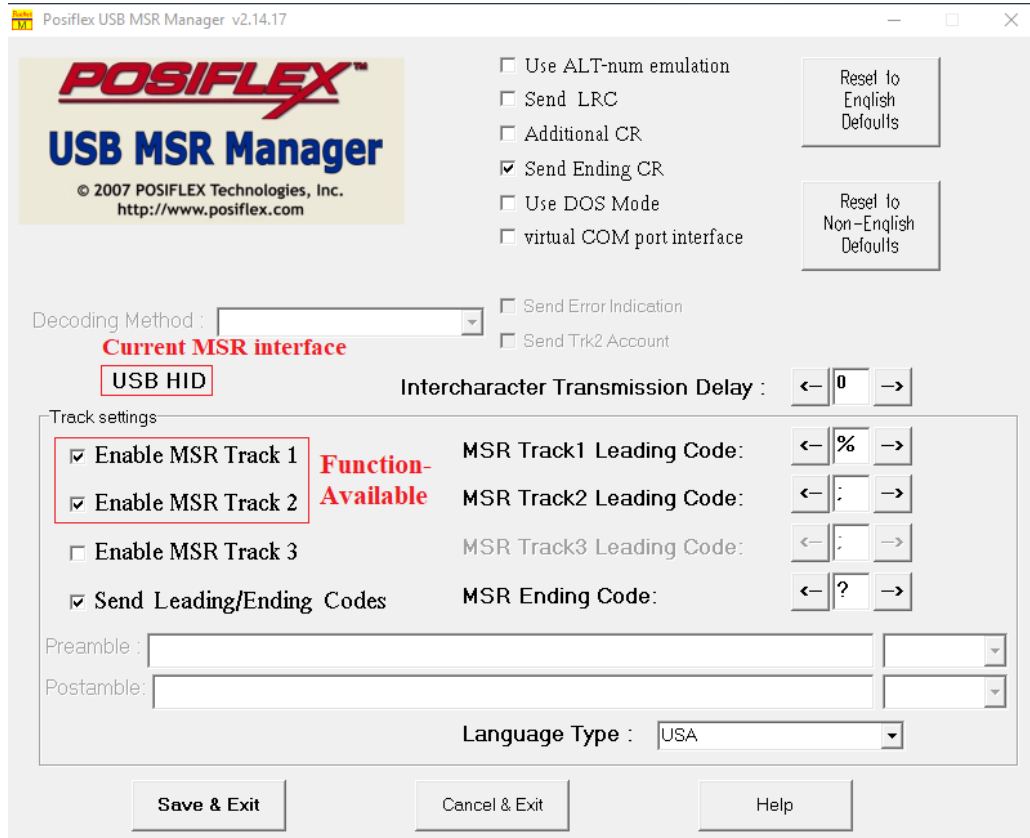
i. Main Screen

The main screen of MSR Manager Utility would be as below shown. From the title, you could check the current “**MSR manager utility’s version**”, and “**MSR Firmware version**”.



ii. MSR Track and Leading Code settings

Under MSR manager, you can depend on current request to enable/disable the Track data 1 to 3. And also setup the Leading/Ending code for your MSR.



Posiflex USB MSR Manager v2.14.17

POSIFLEX™
USB MSR Manager
© 2007 POSIFLEX Technologies, Inc.
http://www.posiflex.com

☐ Use ALT-num emulation
☐ Send LRC
☐ Additional CR
☒ Send Ending CR
☐ Use DOS Mode
☐ virtual COM port interface

Reset to English Defaults
Reset to Non-English Defaults

Decoding Method :

Current MSR interface
USB HID

Intercharacter Transmission Delay :

Track settings

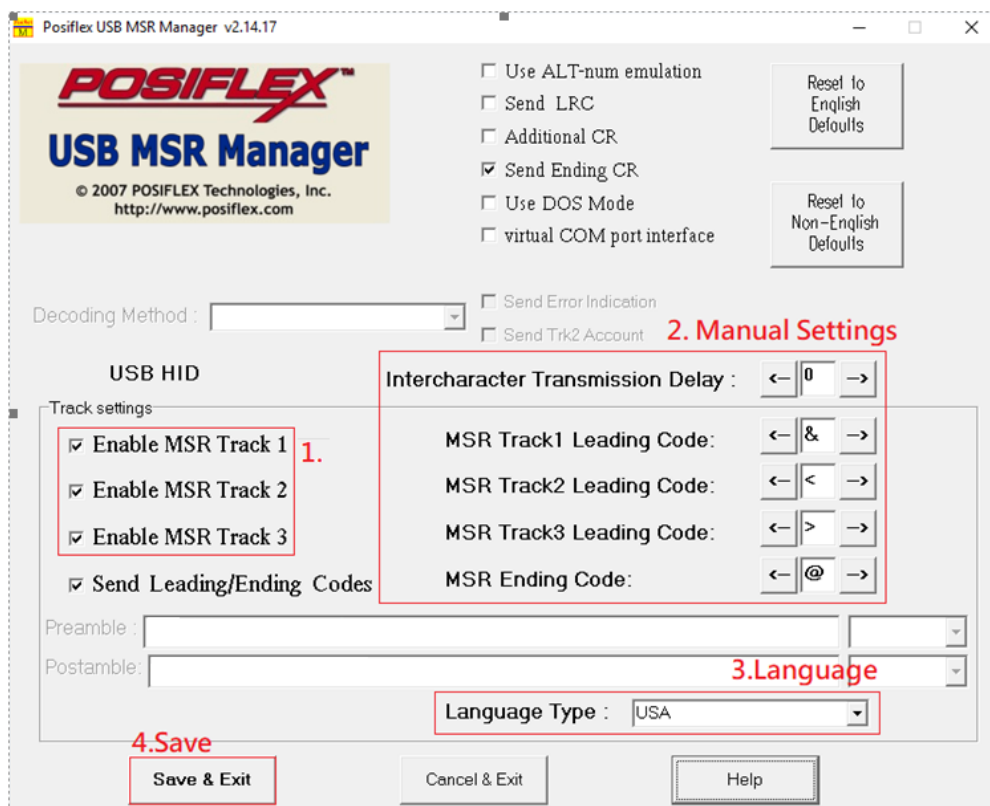
☒ Enable MSR Track 1
☒ Enable MSR Track 2
☐ Enable MSR Track 3
☒ Send Leading/Ending Codes

MSR Track1 Leading Code:
MSR Track2 Leading Code:
MSR Track3 Leading Code:
MSR Ending Code:

Preamble :
Postamble:

Language Type :

Save & Exit Cancel & Exit Help



Posiflex USB MSR Manager v2.14.17

POSIFLEX™
USB MSR Manager
© 2007 POSIFLEX Technologies, Inc.
http://www.posiflex.com

☐ Use ALT-num emulation
☐ Send LRC
☐ Additional CR
☒ Send Ending CR
☐ Use DOS Mode
☐ virtual COM port interface

Reset to English Defaults
Reset to Non-English Defaults

Decoding Method :

USB HID

Intercharacter Transmission Delay :

Track settings

☒ Enable MSR Track 1
☒ Enable MSR Track 2
☒ Enable MSR Track 3
☒ Send Leading/Ending Codes

MSR Track1 Leading Code:
MSR Track2 Leading Code:
MSR Track3 Leading Code:
MSR Ending Code:

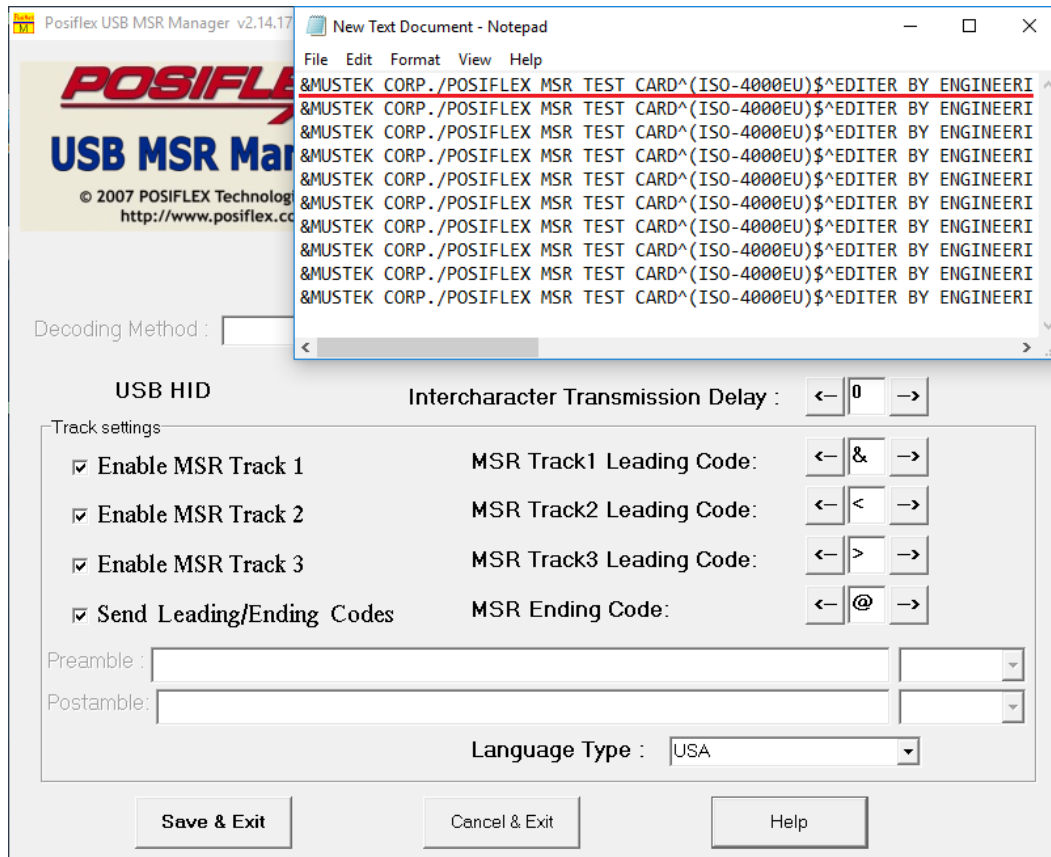
Preamble :
Postamble:

Language Type :

Save & Exit Cancel & Exit Help

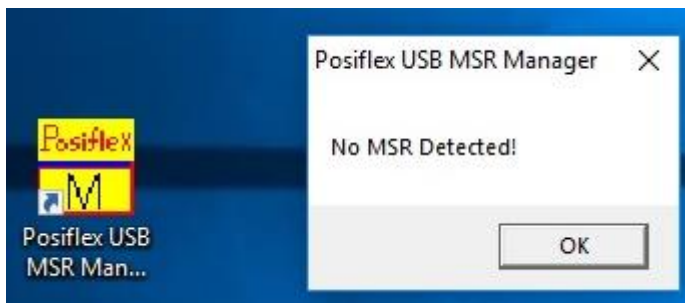
1. 2. Manual Settings 3. Language 4. Save

For standard MSR with “**keyboard wedge**” interface, after setup the configuration -> save & exit the MSR manager, you can run <Notepad> & swipe the card to test & check the MSR reading result directly.



iii. MSR not be detected

After run the MSR manager utility, if you see below error. Please re-connect the MSR again to check if the issue still the same, and you can also check the device detection via <Device Manager>, to make sure if your MSR could be detected under the current system as normal.



III. Switch to Virtual COM interface

Step1 and Step 3: Run the MSR manager utility -> select the item “**Virtual COM port interface**” -> click “OK” -> “Save & Exit” -> Reconnect the MSR or restart your terminal.



Step 4: Check the MSR detection under <Device Manager>, and install VCOM Driver.
http://posiflex.com/en-global/Download/index/driver/MR/MR-2106_MR-2200

USB Virtual Com Port Driver for WinXP/Win7/Win8/Win10_32Bit/64Bit

